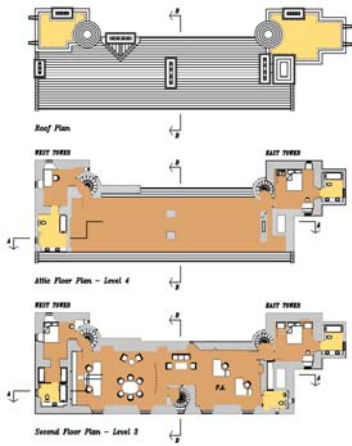


# Historic buildings : Duntarvie Castle

Ed Kelly : Architect

Renovation and refurbishment of a scheduled ancient monument



Duntarvie Castle stands just outside Winchburgh in the West Lothian countryside. On a 1605 copy of a charter dated 1396 there is reference to the fact that there was a castle at Duntarvie as early as 1212.

By 1826 Duntarvie Castle is described in a memorandum to the then owner Lord Hopetown as being "very damp and cold" and in need of urgent repair. It has been uninhabited since 1840.



## The PROJECT : March 2006

Planning Permission has been granted and Scheduled Monument Consent is being sought for renovation and repair, allowing the Castle to become the headquarters of Highland Crafts Ltd. The main castle will accommodate reception, bar, kitchen and storage at ground level, corporate dining and coffee area at first floor level with the directors offices at the second floor level. Within the east tower are located four bedroom suites. Within the west tower is a single suite over three levels accommodating sitting room, bedroom with en suite facilities and a study-office floor.

EK:JN

